



Don't just buy it, Baines it



Triumph parts catalogue

Edition 1

About us

COH Baines was established in 1939, in Liverpool, England by Charles Oswald Henry Baines and his wife, Emily. A family run business, Baines started life as a supplier of motor vehicle spare parts that contained rubber elements.

By the 1960s, Baines was supplying patented rubber weatherstrips to a multitude of industries including, coach and ship building, engineering, aerospace and the sciences. Significant growth ensued. To support these endeavours, a second site in Kent was opened to help service demand for products on a national basis, firstly in Tonbridge and then later, in Tunbridge Wells, where our Sales Office remains to this day.

Today

2020 saw the business establish a UK central warehousing hub back in Liverpool. With great road, rail and airport networks on our doorstep, we are supporting the Supply Chain of our domestic and international customers with a world-class service offering.

Maintaining our family values with a collective knowledge in excess of 70 years, the COH Baines Sales team are industry and application experts who have built long term relationships with our customers, providing product and service solutions to meet the demands of today in some of the most diverse industries. These include Aerospace, Automotive, Construction, Electronics, Engineering and Leisure Industries including, Caravans, Classic Cars and Marine.

We have been ISO certified for over 20 years and our commitment to Quality is demonstrated not only by the integrity of our products, but in how we operate our business; customer satisfaction is at the heart of everything we do.

Our core competencies are rubber, sponge and plastic extrusions, mouldings, matting and tubing.

With an extensive stock holding across more than 1,000 part numbers, alongside a comprehensive range of made to order parts; our products can be purchased 24/7 via our website www.coh-baines.co.uk

We can provide sample profiles prior to purchase to give you confidence you are sourcing exactly what you need. If you can't find exactly what you are looking for, our expert manufacturing team will be able to custom make a solution to your exact specification.

Contents

Accessories	4
<hr/>	
Door, Hood and Boot Seals	7
<hr/>	
Engine Components	12
<hr/>	
Interiors	25
<hr/>	
Windscreen Surrounds	30

Accessories

4

ACCESSORIES

Part	Baines Part Number	OEM Part Number
TRIUMPH BLACK AND SILVER METAL ENAMELLED BADGE	BADGE07	626859

High quality aftermarket reproduction part



Compatible vehicles
Stag, Spitfire, GT6

Material
Metal

Part	Baines Part Number	OEM Part Number
SPITFIRE METAL BLACK ENAMELLED BADGE	BADGE08	627174

High quality aftermarket reproduction part



Compatible vehicles
Spitfire

Material
Metal

Part	Baines Part Number	OEM Part Number
TR3 METAL BLACK AND RED ENAMELLED BONNET BADGE	BADGE15	604272

High quality aftermarket reproduction part



Compatible vehicles
TR3

Material
Metal

Part	Baines Part Number	OEM Part Number
TR3 METAL ENAMELLED BONNET BADGE	BADGE12	606422

High quality aftermarket reproduction part



Compatible vehicles
TR3

Material
Metal

Part	Baines Part Number	OEM Part Number
TR5 METAL ENAMELLED BOOT BADGE	BADGE13	622279



High quality aftermarket reproduction part

Compatible vehicles
TR5

Material
Metal

Part	Baines Part Number	OEM Part Number
TR6 METAL BLACK ENAMELLED GRILL BADGE	BADGE09	625662



High quality aftermarket reproduction part

Compatible vehicles
TR6

Material
Metal

Part	Baines Part Number	OEM Part Number
TR6 ROUND ENAMELLED BADGE	BADGE10	627502



High quality aftermarket reproduction part

Compatible vehicles
TR6

Material
Metal

Part	Baines Part Number	OEM Part Number
TRIUMPH 2000 / 2500 PI BADGE	BADGE16	624239



High quality aftermarket reproduction part

Compatible vehicles
Triumph 2000, 2500

Material
Metal

Accessories

Part	Baines Part Number	OEM Part Number
------	--------------------	-----------------

**TRIUMPH 2000 / 2500
REAR PILLAR TC BADGE**

BADGE17

ZKC1784



High quality aftermarket reproduction part

Compatible vehicles
Triumph 2000, 2500

Material
Metal

Part	Baines Part Number	OEM Part Number
------	--------------------	-----------------

**TRIUMPH 2000 / 2500
REAR PILLAR S BADGE**

BADGE18

ZKC1517



High quality aftermarket reproduction part

Compatible vehicles
Triumph 2000, 2500

Material
EPDM

Part	Baines Part Number	OEM Part Number
------	--------------------	-----------------

**STAG BUMPER TO WING
MOUNTING RUBBER**

NO.509BUFFER

GEX7330



High quality aftermarket reproduction part

Compatible vehicles
Stag

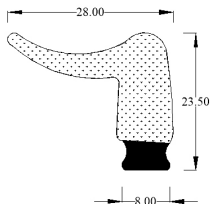
Material
EPDM

Door, Hood and Boot Seals

Part	Baines Part Number
------	--------------------

SPITFIRE HOOD SEAL

SRS144



Sold by metre

Compatible vehicles
Spitfire

Material
EPDM Sponge Rubber

Part	Baines Part Number
------	--------------------

STAG DOOR WAIST SEAL

IRS1801EP



High quality aftermarket reproduction part

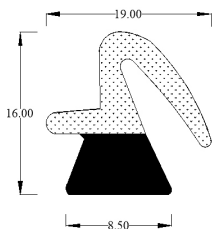
Compatible vehicles
Stag

Material
EPDM

Part	Baines Part Number
------	--------------------

TR2 / TR3 DOOR SEAL

SRS117



High quality aftermarket reproduction part

Compatible vehicles
TR2, TR3

Material
EPDM Sponge Rubber

Door, Hood and Boot Seals

Part	Baines Part Number	OEM Part Number
------	--------------------	-----------------

**TR7 DOOR BUFFER
LEFT HAND**

NO.505BUFFER

YKC4495



High quality aftermarket reproduction part

Compatible vehicles
TR7

Material
EPDM

Part	Baines Part Number	OEM Part Number
------	--------------------	-----------------

**TR7 DOOR BUFFER
RIGHT HAND**

NO.504BUFFER

YKC4494



High quality aftermarket reproduction part

Compatible vehicles
TR7

Material
EPDM

Part	Baines Part Number	OEM Part Number
------	--------------------	-----------------

TR7 DOOR STRIKER GASKET

GSKT11

ZKC369

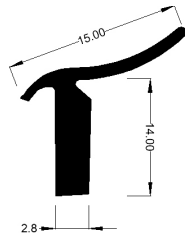


High quality aftermarket reproduction part

Compatible vehicles
TR7

Material
EPDM

Part	Baines Part Number	OEM Part Number
SPITFIRE OUTER WAIST SEAL	OWS3	612792



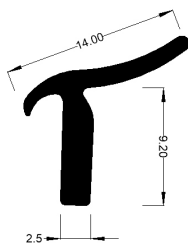
High quality aftermarket reproduction part

Semi-rigid outer waist strip with metal reinforcement

Compatible vehicles
Spitfire

Material
EPDM

Part	Baines Part Number	OEM Part Number
TR6 OUTER WAIST SEAL LEFT HAND	OWS4	850324



High quality aftermarket reproduction part

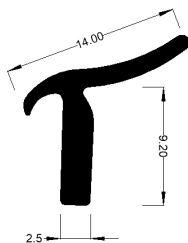
Semi-rigid left hand outer waist strip

Right hand also available - Baines part OWS5

Compatible vehicles
TR6

Material
EPDM

Part	Baines Part Number	OEM Part Number
TR6 OUTER WAIST SEAL RIGHT HAND	OWS5	850325



High quality aftermarket reproduction part

Semi-rigid left hand outer waist strip

Right hand also available - Baines part OWS5

Compatible vehicles
TR6

Material
EPDM

Door, Hood and Boot Seals

10

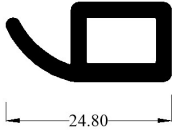
DOOR, HOOD AND BOOT SEALS

Part	Baines Part Number	OEM Part Number
------	--------------------	-----------------

**STAG HOOD STOWAGE /
TONNEAU COVER SEAL**

IRS2009

ZKC730



High quality aftermarket reproduction part
Sold per metre

Compatible vehicles
Stag

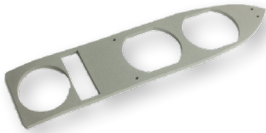
Material
EPDM

Part	Baines Part Number	OEM Part Number
------	--------------------	-----------------

STAG REAR LAMP GASKET

GSKT01

519548G



High quality aftermarket reproduction part

Compatible vehicles
Stag

Material
EPDM Sponge Rubber

Part	Baines Part Number	OEM Part Number
------	--------------------	-----------------

**STAG REAR WING SIDE BADGE /
REPEATER LAMP GASKETS**

GSKT02

150652



High quality aftermarket reproduction part

Compatible vehicles
Stag

Material
EPDM

Part	Baines Part Number	OEM Part Number
STAG DOOR HANDLE GASKETS	GSKT03	718250



High quality aftermarket reproduction part

Compatible vehicles
Stag

Material
EPDM Sponge Rubber

Part	Baines Part Number	OEM Part Number
STAG WINDSCREEN WIPER GASKET	GSKT04	156746



High quality aftermarket reproduction part

Compatible vehicles
Stag

Material
EPDM

Engine Components

12

ENGINE COMPONENTS

Part	Baines Part Number	OEM Part Number
------	--------------------	-----------------

**DIFFERENTIAL MOUNTING CONE
POLYURETHANE**

BUSH10

134235 PU



Polyurethane for exceptional performance and durability

Normally sold with Mounting Cup, part BUSH11

High quality aftermarket reproduction part

Compatible vehicles

Stag, Triumph 2000, 2500, TR4

Material

Polyurethane

Part	Baines Part Number	OEM Part Number
------	--------------------	-----------------

**DIFFERENTIAL MOUNTING CUP
POLYURETHANE**

BUSH11

134236 PU



Polyurethane for exceptional performance and durability

Normally sold with Mounting Cup, part BUSH 10

High quality aftermarket reproduction part

Compatible vehicles

Stag, Triumph 2000, 2500, TR4

Material

Polyurethane

Part	Baines Part Number	OEM Part Number
------	--------------------	-----------------

GEARBOX SELECTOR REMOTE LINKAGE BUSH

NO.506BUFFER

UKC854



8 required per car

High quality aftermarket reproduction part

Compatible vehicles

TR7

Material

EPDM

Part	Baines Part Number	OEM Part Number
HERALD / VITESSE FUEL SEND UNIT COVER	FUELCAP04	123286



High quality aftermarket reproduction part

Compatible vehicles Herald, Vitesse	Material Nitrile
---	----------------------------

Part	Baines Part Number	OEM Part Number
HERALD / VITESSE INLET MANIFOLD AND WATER HOSE	HOSE002	214412



High quality aftermarket reproduction part

Compatible vehicles Herald	Material EPDM with Kevlar reinforcement
--------------------------------------	---

Part	Baines Part Number	OEM Part Number
HERALD / VITESSE INLET MANIFOLD WATER HOSE	HOSE005	214411



High quality aftermarket reproduction part

Compatible vehicles Herald	Material EPDM with Kevlar reinforcement
--------------------------------------	---

Part	Baines Part Number	OEM Part Number
HERALD / VITESSE LARGE FUEL FILLER CAP	FUELCAP03	601661



High quality aftermarket reproduction part

Compatible vehicles Herald, Vitesse	Material Nitrile
---	----------------------------

Engine Components

Part	Baines Part Number	OEM Part Number
SPITFIRE / DOLOMITE HEATER HOSE	HOSE004	GZA 2052

High quality aftermarket reproduction part

See website:
www.coh-baines.co.uk
 for image

Compatible vehicles Spitfire, Dolomite	Material EPDM with Kevlar reinforcement
--	---

Part	Baines Part Number	OEM Part Number
STAG / DOLOMITE BONNET BUFFER	NO.508BUFFER	619551



High quality aftermarket reproduction part

Compatible vehicles Stag, Dolomite, Toledo, Morris Minor	Material EPDM
--	-------------------------

Part	Baines Part Number	OEM Part Number
STAG / TR7 / DOLOMITE CAMBOX END PLUG	NO.501BUFFER	144488



High quality aftermarket reproduction part

Compatible vehicles Stag, TR7, Dolomite	Material EPDM
---	-------------------------

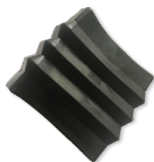
Part	Baines Part Number	OEM Part Number
STAG / TRIUMPH 2000 / 2500 FRONT STRUT GAITORS	T/GAITER03	138748



High quality aftermarket reproduction part

Compatible vehicles Stag, Triumph 2000, 2500	Material EPDM
--	-------------------------

Part	Baines Part Number	OEM Part Number
STAG AIR INTAKE GAITOR	T/GAITER01	156028



High quality aftermarket reproduction part

Compatible vehicles
Stag

Material
EPDM

Part	Baines Part Number	OEM Part Number
STAG BREATHER HOSE	HOSE006	216923



High quality aftermarket reproduction part

Compatible vehicles
Stag

Material
EPDM with Kevlar
reinforcement

Part	Baines Part Number	OEM Part Number
STAG ELBOW CONNECTOR	CONNECTOR01	153662



Suitable for Air Intake, Fuel Pipe and Fuel Filter
High quality aftermarket reproduction part

Compatible vehicles
Stag

Material
Nitrile

Part	Baines Part Number	OEM Part Number
STAG FRONT TRACK ARM BUSH POLYURETHANE	BUSH07	138885PU



High quality aftermarket reproduction part

Compatible vehicles
Stag

Material
Polyurethane

Engine Components

16

ENGINE COMPONENTS

Part	Baines Part Number	OEM Part Number
------	--------------------	-----------------

STAG FUEL FILLER CAP

FUELCAPO2

725414



High quality aftermarket reproduction part

Compatible vehicles
Stag

Material
Nitrile

Part	Baines Part Number	OEM Part Number
------	--------------------	-----------------

STAG HEATER HOSE

HOSE001

157379



High quality aftermarket reproduction part

Compatible vehicles
Stag

Material
EPDM with Kevlar reinforcement

Part	Baines Part Number	OEM Part Number
------	--------------------	-----------------

STAG MANUAL GEAR LEVER GAITER

T/GAITER04

715382



High quality aftermarket reproduction part

Compatible vehicles
Stag

Material
EPDM

Part	Baines Part Number	OEM Part Number
------	--------------------	-----------------

STAG OUTER STEERING COLUMN BUSH

BUSH12

153040



High quality aftermarket reproduction part

Compatible vehicles
Stag

Material
Plastic

Part	Baines Part Number	OEM Part Number
STAG T CONNECTOR FOR AIR CLEANER	CONNECTOR02	152431



Connects into back of Air Cleaner
High quality aftermarket reproduction part

Compatible vehicles Stag	Material Nitrile
------------------------------------	----------------------------

Part	Baines Part Number	OEM Part Number
STAG WATER PUMP HOSE	HOSE014	GRH 815



High quality aftermarket reproduction part

Compatible vehicles Stag	Material EPDM with Kevlar reinforcement
------------------------------------	---

Part	Baines Part Number	OEM Part Number
TAILPIPE MOUNTING BLOCK POLYURETHANE	BUSH09	GEX7331PU



High quality aftermarket reproduction part
Polyurethane for exceptional performance and durability

Compatible vehicles Stag, Dolomite, Triumph 2000	Material Polyurethane
---	---------------------------------

Part	Baines Part Number	OEM Part Number
TAILPIPE MOUNTING BLOCK RUBBER	BUSH08	GEX7331



High quality aftermarket reproduction part

Compatible vehicles Stag, Dolomite, Triumph 2000, 2500	Material EPDM
---	-------------------------

Engine Components

Part	Baines Part Number	OEM Part Number
TOP STRUT GROMMET	TOPSTRUTGROMMET	138760



High quality aftermarket reproduction part

Compatible vehicles
Stag, Triumph 2000, 2500

Material
EPDM

Part	Baines Part Number	OEM Part Number
TR4 CARBURETTOR DIAPHRAGM	GSKT17	512278



High quality aftermarket reproduction part

Compatible vehicles
TR4

Material
Nitrile

Part	Baines Part Number	OEM Part Number
TR5 / TR6 BOTTOM RADIATOR HOSE	HOSE015	GRH 393



High quality aftermarket reproduction part

Compatible vehicles
TR5, TR6

Material
EPDM with Kevlar reinforcement

Part	Baines Part Number	OEM Part Number
TR5 / TR6 / 2.5 FUEL METERING UNIT DIAPHRAGM SEAL	IRS2011	519870



High quality aftermarket reproduction part

Compatible vehicles
Triumph 2.5, TR5, TR6

Material
Viton

Part	Baines Part Number	OEM Part Number
TR7 EXHAUST MOUNTING RING	NO.510BUFFER	GEX7487



High quality aftermarket reproduction part

Compatible vehicles	Material
TR7	Nitrile

Part	Baines Part Number	OEM Part Number
TR7 RADIATOR BOTTOM HOSE	HOSE011	GRH 524



High quality aftermarket reproduction part

Compatible vehicles	Material
TR7	EPDM with Kevlar reinforcement

Part	Baines Part Number	OEM Part Number
TR7 RADIATOR TOP HOSE	HOSE012	GRH 664



High quality aftermarket reproduction part

Compatible vehicles	Material
TR7	EPDM with Kevlar reinforcement

Part	Baines Part Number	OEM Part Number
TRIUMPH 2000 / 2500 GEAR LEVER GAITER	T/GAITER05	708311



High quality aftermarket reproduction part

Compatible vehicles	Material
Triumph 2000, 2500	EPDM

Engine Components

Part	Baines Part Number	OEM Part Number
TRIUMPH 2000 / 2500 HANDBRAKE GAITER	T/GAITER06	209761



High quality aftermarket reproduction part

Compatible vehicles Triumph 2000, 2500	Material EPDM
--	-------------------------

Part	Baines Part Number	OEM Part Number
TRIUMPH BREATHER HOSE	HOSE009	GRH 817



High quality aftermarket reproduction part

Compatible vehicles TR7, Dolomite	Material EPDM with Kevlar reinforcement
---	---

Part	Baines Part Number	OEM Part Number
TRIUMPH HEATER HOSE	HOSE007	216924



High quality aftermarket reproduction part

Compatible vehicles Stag, Spitfire, Dolomite, Triumph 2000	Material EPDM with Kevlar reinforcement
--	---

Part	Baines Part Number	OEM Part Number
TRIUMPH HEATER HOSE	HOSE013	GZA 1338



High quality aftermarket reproduction part

Compatible vehicles Spitfire, Vitesse, Triumph 2000	Material EPDM with Kevlar reinforcement
---	---

Part	Baines Part Number	OEM Part Number
VITESSE RADIATOR HOSE	HOSE010	GRH 263



High quality aftermarket reproduction part

Compatible vehicles
Vitesse

Material
EPDM with Kevlar
reinforcement

Part	Baines Part Number	OEM Part Number
VITESSE / GT6 INLET MANIFOLD AND WATER HOSE	HOSE003	137876



High quality aftermarket reproduction part

Compatible vehicles
Vitesse, GT6

Material
EPDM with Kevlar
reinforcement

Part	Baines Part Number	OEM Part Number
TOP RADIATOR HOSE	RADHOSE01	GRH533



High quality aftermarket reproduction part

Compatible vehicles
Herald, Vitesse, Spitfire, GT6

Material
EPDM

Engine Components

Part	Baines Part Number	OEM Part Number
NITRILE O-RING - WATER PUMP	NT.RING01	148169

High quality aftermarket reproduction part

Compatible vehicles Stag, TR7	Material Nitrile
---	----------------------------

Part	Baines Part Number	OEM Part Number
NITRILE O-RING - HEATER CONTROL VALVE	NT.RING02	CA2107

High quality aftermarket reproduction part

Compatible vehicles Stag	Material Nitrile
------------------------------------	----------------------------

Part	Baines Part Number	OEM Part Number
NITRILE O-RING - OIL TRANSFER HOUSING SMALL	NT.RING03	144959

High quality aftermarket reproduction part

Compatible vehicles Stag	Material Nitrile
------------------------------------	----------------------------

Part	Baines Part Number	OEM Part Number
NITRILE O-RING - OIL TRANSFER HOUSING LARGE	NT.RING04	144958

High quality aftermarket reproduction part

Compatible vehicles Stag	Material Nitrile
------------------------------------	----------------------------

Part	Baines Part Number	OEM Part Number
NITRILE O-RING - OIL PUMP INNER	NT.RING05	517721

High quality aftermarket reproduction part

Compatible vehicles Stag, TR7	Material Nitrile
---	----------------------------

Part	Baines Part Number	OEM Part Number
NITRILE O-RING - WATER PUMP	NT.RING06	148170
	High quality aftermarket reproduction part	
	Compatible vehicles Stag, TR7	Material Nitrile
Part	Baines Part Number	OEM Part Number
NITRILE O-RING - PUMP TO BLOCK	NT.RING07	145861
	High quality aftermarket reproduction part	
	Compatible vehicles Stag, TR7	Material Nitrile
Part	Baines Part Number	OEM Part Number
NITRILE O-RING - OIL PUMP PRESSURE RELEASE VALVE	NT.RING08	517722
	High quality aftermarket reproduction part	
	Compatible vehicles Stag, Spitfire, GT6, Herald, Vitesse, TR6, TR7	Material Nitrile
Part	Baines Part Number	OEM Part Number
NITRILE O-RING - CARB TO MANIFOLD	NT.RING09	153034
	High quality aftermarket reproduction part	
	Compatible vehicles Stag, Spitfire, GT6, Herald, Vitesse, TR6, TR7	Material Nitrile

Engine Components

24

ENGINE COMPONENTS

Part	Baines Part Number	OEM Part Number
NITRILE O-RING - BREATHER BODY	NT.RING10	143026
High quality aftermarket reproduction part		
	Compatible vehicles Stag	Material Nitrile
Part	Baines Part Number	OEM Part Number
NITRILE O-RING - HEATER SEAL	NT.RING11	C9928A
High quality aftermarket reproduction part		
	Compatible vehicles Stag, Spitfire, GT6, Herald, Vitesse, TR6, TR7	Material Nitrile

Interiors

Part	Baines Part Number	OEM Part Number
ACCELERATOR PEDAL	PEDAL05	150881



Brake/Cluth pedal also available – part number PEDAL02

High quality aftermarket reproduction part

Compatible vehicles
Suitable for all manual Triumph models

Material
EPDM

Part	Baines Part Number	OEM Part Number
CLUTCH / BRAKE PEDAL	PEDAL02	150879



Pedal suitable for Brake and Clutch pedals

Fits all manual Triumphs

Accelerator pedal also available – part number PEDAL05

Compatible vehicles
Suitable for all manual Triumph models

Material
EPDM

Part	Baines Part Number	OEM Part Number
DOLOMITE ACCELERATOR PEDAL	PEDAL12	152165



High quality aftermarket reproduction part

Compatible vehicles
Dolomite

Material
EPDM

Part	Baines Part Number	OEM Part Number
HERALD / VITESSE FRONT SEAT ADJUSTING BLOCK	NO.507BUFFER	608759



High quality aftermarket reproduction part

Compatible vehicles
Herald, Vitesse

Material
EPDM

Interiors

26

INTERIORS

Part	Baines Part Number	OEM Part Number
HERALD / VITESSE SEAT DIAPHRAGM	GSKT07	569444



Supplied with metal fitting hooks
High quality aftermarket reproduction part

Compatible vehicles Herald, Vitesse	Material EPDM
---	-------------------------

Part	Baines Part Number	OEM Part Number
STAG / SPITFIRE HEATER DRAIN RUBBER FLAP	IRS2010	616206



High quality aftermarket reproduction part

Compatible vehicles Stag, Spitfire	Material EPDM
--	-------------------------

Part	Baines Part Number	OEM Part Number
STAG AUTOMATIC BRAKE PEDAL	PEDAL01	150883



High quality aftermarket reproduction part

Compatible vehicles Stag	Material EPDM
------------------------------------	-------------------------

Part	Baines Part Number	OEM Part Number
STAG BOOT LEVER COVER RUBBER	T/GAITER02	17H8057



High quality aftermarket reproduction part

Compatible vehicles Stag	Material EPDM
------------------------------------	-------------------------

Part	Baines Part Number	OEM Part Number
STAG DASHBOARD TOP RUBBER PAD	GSKT21	722492



High quality aftermarket reproduction part

Compatible vehicles	Material
Stag	EPDM

Part	Baines Part Number	OEM Part Number
STAG SEAT DIAPHRAGM	GSKT06	813787



Supplied with metal fitting hooks

High quality aftermarket reproduction part

Compatible vehicles	Material
Stag	EPDM

Part	Baines Part Number	OEM Part Number
TR4 / TR5 / TR6 SEAT DIAPHRAGM	GSKT05	612251



Supplied with metal fitting hooks

High quality aftermarket reproduction part

Compatible vehicles	Material
TR4, TR5, TR6	EPDM

Part	Baines Part Number	OEM Part Number
TRIUMPH 2000 / 2500 FOOT PEDAL RUBBER	PEDAL10	113894



High quality aftermarket reproduction part

Compatible vehicles	Material
Triumph 2000, 2500	EPDM

Interiors

28

INTERIORS

Part	Baines Part Number	OEM Part Number
------	--------------------	-----------------

**TRIUMPH 2000 / 2500
SEAT DIAPHRAGM LEFT HAND**

GSKT13L/H

808938



Supplied with metal fitting hooks
High quality aftermarket reproduction part

Compatible vehicles
Triumph 2000, 2500

Material
EPDM

Part	Baines Part Number	OEM Part Number
------	--------------------	-----------------

**TRIUMPH 2000 / 2500
SEAT DIAPHRAGM RIGHT HAND**

GSKT13R/H

808939



Supplied with metal fitting hooks
High quality aftermarket reproduction part

Compatible vehicles
Triumph 2000, 2500

Material
EPDM

Part	Baines Part Number	OEM Part Number
------	--------------------	-----------------

TRIUMPH T-LOGO PEDAL

PEDAL06

122289



High quality aftermarket reproduction part

Compatible vehicles
Herald, Vitesse, Spitfire,
TR2, TR5, TR6, GT6

Material
EPDM

Part	Baines Part Number	OEM Part Number
TRIUMPH TR5 / TR6 SEAT BUFFER	NO.502BUFFER	621515



High quality aftermarket reproduction part

Compatible vehicles	Material
TR5, TR6	EPDM

Part	Baines Part Number	OEM Part Number
TRIUMPH TR7 SEAT DIAPHRAM	GSKT10	XKC320



Supplied with metal fitting hooks

High quality aftermarket reproduction part

Compatible vehicles	Material
TR7	EPDM

Windscreen Surrounds

30

WINDSCREEN SURROUNDS

Part	Baines Part Number	OEM Part Number
------	--------------------	-----------------

**DOLOMITE / TOLEDO
FRONT WINDSCREEN SURROUND**

ES44

904111



High quality aftermarket reproduction part

Compatible vehicles
Dolomite, Toledo

Material
EPDM

Part	Baines Part Number	OEM Part Number
------	--------------------	-----------------

GT6 FRONT QUARTER LIGHTS - PAIR

QLR14-PAIR

5740989

See website:
www.coh-baines.co.uk
for image

High quality aftermarket reproduction part

Compatible vehicles
GT6

Material
EPDM

Part	Baines Part Number	OEM Part Number
------	--------------------	-----------------

HERALD FRONT WINDSCREEN SURROUND

ES29

805856



High quality aftermarket reproduction part

Compatible vehicles
Herald

Material
EPDM

Part	Baines Part Number	OEM Part Number
------	--------------------	-----------------

SPITFIRE FRONT WINDSCREEN SURROUND

ES91

909029



High quality aftermarket reproduction part

Compatible vehicles
Spitfire

Material
EPDM

Part	Baines Part Number	OEM Part Number
STAG FRONT WINDSCREEN SURROUND	ES86	812785

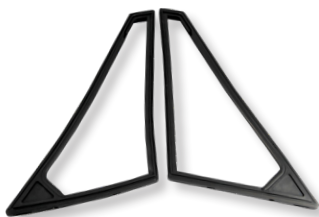


High quality aftermarket reproduction part

Compatible vehicles
Stag

Material
EPDM

Part	Baines Part Number	OEM Part Number
STAG QUARTERLIGHT RUBBERS - PAIR	QLR8-PAIR	9104289



High quality aftermarket reproduction part

Compatible vehicles
Stag

Material
EPDM

Part	Baines Part Number	OEM Part Number
TR4 / TR5 / TR6 FRONT WINDSCREEN SURROUND	ES89	913442



High quality aftermarket reproduction part

Compatible vehicles
TR4, TR5, TR6

Material
EPDM

Windscreen Surrounds

32

WINDSCREEN SURROUNDS

Part	Baines Part Number	OEM Part Number
TR4 REAR WINDSCREEN SURROUND	ESBL10	902349



High quality aftermarket reproduction part

Compatible vehicles
TR4

Material
EPDM

Part	Baines Part Number	OEM Part Number
TRIUMPH 2000 FRONT WINDSCREEN SURROUND	ES43	707036



High quality aftermarket reproduction part

Compatible vehicles
Triumph 2000/2500

Material
EPDM



01892 543 311



sales@coh-baines.co.uk

No. 9
D. H. BAINES LIMITED
9 PARK ROAD, TONBRIDGE WELLS, KENT
Telephone: Tunbridge Wells 24177/8

BAINES LIMITED
SUITABLE FOR
AUSTIN CARS
ADD ROAD, TONBRIDGE
Telephone: TONBRIDGE
Nos. 529,527, 635,443 and 667,94

WEATHERS
SHIPBUILDING AND
ENTS, SCIENTIFIC
N EQUIPMENT, F
TO PATENTS M
ED IN AC
TIONS, M

C. O. H. BAINES LTD.
PARTS S
MORNING CAR
77 RENSHAW ST
LIVERPOOL
Telephone: 24177/8

H BAINES
r Mouldings
ght Excluders
mings
usions
eeting
c etc

Rubber Mouldings and Extrusions

Nett Prices to the
Motor, Coachbuilding,
Aircraft, Shipbuilding
and
Engineering Trades

C. O. H. BAINES LTD.
LIVERPOOL
and TONBRIDGE, KENT





Don't just buy it, Baines it



01892 543 311



sales@coh-baines.co.uk



www.coh-baines.co.uk

COH Baines

Unit 3, Enterprise Centre
Chapman Way
Tunbridge Wells
TN2 3DR